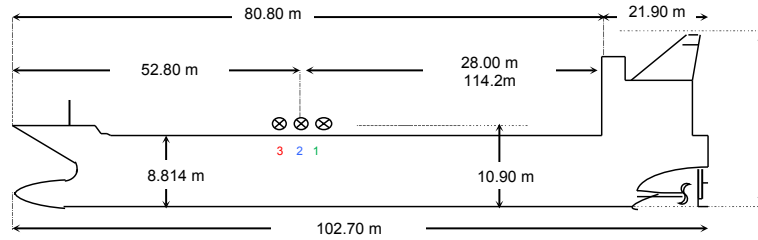


SHIP'S PARTICULARS M/T " MUMBAI "

NAME	MUMBAI	KEEL LAID	18 April 2008	SATELLITE COMMUNICATION	
CALL SIGN	V7BI5	LAUNCHED	08-Jun-2009	E-MAIL	bridge@mumbai.bibbyships.com
FLAG	MAJURO	DELIVERED	12- Nov- 2009	PHONE	870773204722
PORT OF REGISTRY	MAJURO	SHIPYARD	RONGCHENG SHENFEI SHIPBUILDING CO, CHINA	FAX	
OFFICIAL NUMBER	5147			TELEX	453838660 453838661
IMO NUMBER	9555187			MMSI	538005147
CLASS SOCIETY	DNV-GL			Iridium	881677710999
CLASS NOTATION	100 A5 Oil Tanker ESP / MC AUT CM-PS			FLAG	MAJURO EX. NAMES CF MUMBAI
P & I CLUB	Gard,Assurance foreningen Gard- gjensidig P.O Box 789 Stoa NO-4809 ARENDAL NORWAY				
OWNERS	MUMBAI SINGAPORE PTE. LTD.				
OPERATORS	BIBBY SHIP MANAGEMENT (SINGAPORE) PTE. LTD. 6 SHENTON WAY, #18-08A OUE DOWNTOWN 2, SINGAPORE 068809				

PRINCIPAL DIMENSIONS	
LOA	102.7m
LBP	95.23m
BREADTH (Extreme)	17.8m
DEPTH (molded)	8.8m
HEIGHT (maximum)	34.2m
BRIDGE FRONT - BOW	80.8m
BRIDGE FRONT - STERN	21.9m
BRIDGE FRONT - MFOLD	28m



TONNAGE	REGD	SUEZ	Panama
NET	1871	3972	
GROSS	4640	4926	3898

LOAD LINE INFORMATION	FREEBOARD	DRAFT	DWT
TROPICAL	2.176m	6.648m	6360.91mt
SUMMER	2.311m	6.513m	6188.247mt
WINTER	2.446m	6.378m	5944.08mt
NORMAL BALLAST COND	4.07m	4.75m	3465.582mt
Summer Displacement			8,745.19
LIGHT WEIGHT	2629.671mt at 2.208m dft		
FWA	142mm		
TPC @ Summer draft	15.43		

TANK CAPACITIES (cbm)				
CARGO TANKS (98 %)			BLST TKS (100 %)	
COT 1 P	544.583	SLOP P	116.424	F.P.Tk. 148.059
COT 1 S	543.294	SLOP S	116.349	D.P.Tk 269.875
COT 2 P	659.969	TOTAL CT'S	6811.552	WBT 1P/S 220.362/228.352
COT 2 S	661.218	Ttl without slops	6578.779	WBT 2P/S 229.379/220.390
COT 3 P	672.024	FW Tanks 100%		WBT 3P/S 221.256/230.245
COT 3 S	672.366	FW Tank (P)	58.371	WBT4P/S 230.441/221.452
COT 4 P	671.802	FW Tank (S)	58.371	WBT 5P/S 158.116/164.608
COT 4 S	672.437	TOTAL	116.742	WBT 6P/S 145.668/140.175
COT 5 P	741.326			A.P. Tk 99.864
COT 5 S	739.760			
Heating coils - 2 per CT - steam				TOTAL 2928.242
Max cargo Temp=65°C				
OTHER DETAILS				
H. Level Alarm	95%	Level gauge	RADAR TYPE	
Overfill Alarm	98%			

MACHINERY / PROPELLER / RUDDER	
MAIN ENGINE	Himsen Hyundai. Model: 9H25/33P
M.C.R.	3550BHPx900 /227.7 RPM
N.C.R	3017.5 BHPx852.5/215.7 RPM,
AUX. BOILER (1 set)	Jiangsu Greens shazou - 6000 kg/hr
	444KW X 450 X60Hz
EMER D.G. (1)	132 KW x 450v x 60Hz
PROPELLER	Single, CPP, 4 Blades
RUDDER	Steamline backrudder 1 set
STEERING GEAR	Electro Hydraulic type
FW GENERATOR CAP	10 ton/day

BUNKER TANKS	
FOT P	85.27
FOT (S)	91.10
FOT (CP)	25.90
FO (SRV)	16.1/15.9
FO SETT	17.2/15.0
TOTAL	266.55
DOT (P/S)	26.4/24.6
DOT (C)	28.85
DO Set	9.1/8.6
DO Srv	7.67/7.97
TOTAL	113.18

WINCHES / WINDLASS / ROPES / EMERGENCY TOWING			
	FWD	AFT	PARTICULARS
WINDLASS	2	0	EL-HYDRAULIC
WINCHES	2	2	EL-HYDRAULIC, coupled with windlass
MRG ROPES	5	5	40 mm DIA x 200 Mtrs
FIRE WIRE	1	1	22mm(6x37) x 25 mtrs
ANCHOR	2	0	3.310 t
CHAIN	2	0	46mm DIA, 9 SHACKLES EACH

CARGO AND BALLAST PUMPING SYSTEM				
MAIN PUMPS	NO.	CAPACITY	HEAD	RPM
CARGO OIL P/P's	2	750 m³/hr	90 m	1450
CARGO OIL P/P's	1	300 m³/hr	90 m	1450
Stripping Pump	1	150 m³/hr	60 m	1750
BALLAST P/P's	2	200 m³/hr	25 m	1750

LIFE BOATS	
1 x 22 Persons	
Freefall	
LIFE RAFTS	
2 x 25 Persons	
PROV. CRANE	
1.5T	

MANIFOLD ARRANGEMENT (400 mm / Steel)	
Distance of cargo manifold to cargo manifold	1500
Distance of cargo manifold to vpr. return manifold	1500
Distance of manifolds to ship's rail	3800
Distance of spill tray grating to centre of manifold	900
Distance of main deck to centre of manifold	2100
Distance of main deck to top of rail	1050
Distance of top of rail to centre of manifold	1050
Distance of manifold to ship side	3800
Distance of manifold from keel	10900

CARGO HOSE CRANES	
1 x 2 Ton hose handling crane	

IG / VAPOR EMISSION / VENTING	
BLOWER CAPACITY	N/A
P/V VALVE PR./ VAC. SETTING	2000mm WG/-350mm WG

PROPELLER	
Prop Immer : 4.063 m	
Prop Dia : 3.4 m	

FIRE FIGHTING SYSTEM	
E/RM	CARBON DIOXIDE, HYPER MIST
PUMP ROOM	CARBON DIOXIDE
CARGO/DK AREA	LOW EXPANSION FOAM, SEA WATER